



Fire Rated Glazed Doors

Fire Rated Glazed Partition

Bullet Proof Window Profiles



Abu Dhabi Civil Defence



Abu Dhabi Civil Defence Installation



Sharjah Civil Defence



Dubai Civil Defence



Umm Al Quwain Civil Defence



Ajman Civil Defence



Table of Content
PRODUCTS RANGE

SN. No.	PG. No.
01. Metal Glazed Doors & Partition	
1.1 Fully Glazed Swing Latched Single and Double Leafs Steel Door Sets (E & EW)	04-05
1.2 Fully Glazed Swing Latched Single And Double Leafs Steel Door Sets- Integrity and Insulation	06-07
1.3 Fully Glazed Doorset With Side Light And Transom Panels (E & EW)	08-09
1.4 Glazed Steel Windows Fixed And Openable (E, EW, EI)	10-11
1.5 Fully Glazed Steel Partition - Unlimited Width	12-13
1.6 Fully Glazed Butt Joint System- Integrity and Insulation	14-15
1.7 Steel Fire Rated Glazed Curtain Jansen Walls Systems Steel - (EW)	16-17
02 . Aluminum Glazed Doors & Partition	
2.1 Fire Rated Aluminium Glazed Doors and Partitions	18-19
03 . Ballistic and Security System Product	
3.1 Bullet Proof Doors & Windows	20-21
04 . Selection Guide	
4.1 Fire Door Selection Guide	22-23
4.2 Shado Profile Details	24
4.2 Door Handling	25
4.3 Fire Rated Doors full ranges	26-27



Fully Glazed Swing Latched Single and Double Leafs Steel Door Sets (E & EW)

Description

Alternative to steel doors, special designed fully glazed fire rated and non-fire rated glazed doors for traditional store front and entrance system, Narrow stiles and rails with special concealed hardware for good aesthetic view, increased glazed area slimmer profile integrity and intergrity with radiation control.

Specifications

Construction	Mechanically interlocked, hemmed vertical edge seam with inverted top and bottom channel welded to both face sheets /Alternate special designed mechanically formed narrow profiles
Materials	Cold rolled galvanized steel sheet confirm to ASTM or equivalent standard
Gauge/Door Thickness	52 to 60mm thick door with skin thickness 1.2 to 2.0 mm
Core Or Insulation	Fully glazed- No core
Glass	Fire rated glass 5 to 20mm thick / certified to E and EW
Application	Light to extra heavy duty use as per SDI
Frame Gauge/Jamb Depth	1.5 to 4mm/ up to 500mm
Ironmongery	Tested and Certified as per door test standard BS and EN
Fire Rating	Up to 176 minutes as per EN/BS
Test Standard	EN 1634-1/ BS 476 part20-22
Certification	Intertek, BM trada, Exova Warrington
Finish	Powder coated/ Wood finish/ Wet paint meets ANSI A 250.3 and ANSI A 250.10

Additional Features

- Seamless welded design
- Alternate Stainless-steel material
- Alternate glass specification
- Additional top panel
- Knock down frame /Groove frame with kerf gasket
- Smoke rated as per UL1784 / BS476 section 31.1/BSEN 1634-3
- Acoustical



Single Leaf Glazed Door

Fully Glazed Swing Latched Single and Double Leafs Steel Door Sets (E & EW)



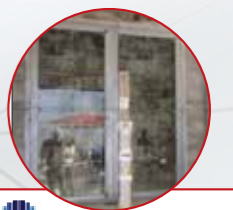
Stainless Steel (Oval Shape)



Steel Powder Coated Glazed Door



Stainless Steel Mirror or Brush



Fully Glazed Swing Latched Single And Double Leafs Steel Door Sets - Integrity and Insulation

Description

Construction	Mechanically formed special narrow profile insulated
Materials	Cold rolled galvanized steel sheet confirm to ASTM or equivalent standard
Gauge/Door Thickness	81 mm thick door with skin thickness 1.2 to 2.0 mm
Core Or Insulation	Fully glazed- Special fire resistive infill
Glass	Fire rated glass – fully insulated confirms to EI requirement
Application	Light to extra heavy duty use as per SDI
Frame Profiles	Mechanically formed special narrow profile - insulated
Ironmongery	Tested and Certified as per door test standard BS and EN
Fire Rating	EI 90 minutes single and EI 60, EW 120 for double door configuration
Test Standard	EN 1634-1/ BS 476 part20-22
Certification	Intertek, BM trada, Exova Warrington
Finish	Powder coated/ Wood finish/ Wet paint meets ANSI A 250.3 and ANSI A 250.10

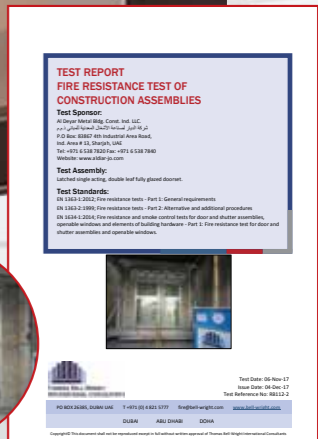
Additional Features

- Alternate Stainless-steel material
- Alternate glass specification
- Additional top panel
- Smoke rated as per UL1784 / BS476 section 31.1/BSEN 1634-3
- Acoustical



Fire Rated Steel Glazed Door with Wooden Finish

Fully Glazed Swing Latched Single And Double Leafs Steel Door Sets - Integrity and Insulation



Fully Glazed Doorset With Side Light And Transom Panels (E & EW)

Description

Alternative to steel doors, special designed fully glazed fire rated and non-fire rated glazed doors with side and top panels for traditional store front and entrance system, Narrow stiles and rails with standard and concealed hardware for good aesthetic view, increased glazed area with slimmer profile

Specifications

Construction	Mechanically formed special narrow profile
Materials	Cold rolled galvanized steel sheet confirm to ASTM or equivalent standard
Gauge/Door Thickness	60 mm thick door with skin thickness 1.2 to 1.8 mm
Size	3000x 3000mm (wxh) and no limitation in width
Core Or Insulation	Fully glazed- No core
Glass	Fire rated glass
Application	Light to extra heavy duty use as per SDI
Frame Profiles	Mechanically formed special narrow profile
Ironmongery	Tested and Certified as per door test standard BS and EN
Fire Rating	E 180 minutes - EW 120 Minutes
Test Standard	EN 1634-1/ BS 476 part20-22
Certification	Intertek, BM trada, Exova Warrington
Finish	Powder coated/ Wood finish/ Wet paint meets ANSI A 250.3 and ANSI A 250.10

Additional Features

- Alternate Stainless-steel material
- No limitation in width, height can be replicate by a separator
- Side lite and transom lite is separated with mullion and transom
- Alternate glass specification
- Smoke rated as per UL1784 / BS476 section 31.1/BSEN 1634-3
- Acoustical



FR Glazed Door with Side and Top Panels

Fully Glazed Doorset With Side Light And Transom Panels (E & EW)



FR Stainless Steel Glazed Door with Side and Top Panels

TEST REPORT
FIRE RESISTANCE TEST OF CONSTRUCTION ASSEMBLIES
 Test Sponsor:
 Al Deyar Metal Bldg. Const. Ind. LLC
 P.O. Box 48822 47 Industrial Area Road,
 Al Khayma, Ras Al Khayma, U.A.E.
 Tel: +973 733 3388 Fax: +973 733 3389
 Email: info@aldehyar.com
 Test Assembly:
 Fully Glazed Doorset with side light and transom.
 Test Standards:
 BS 476-22 Part 20:2002 (Fire resistance tests - Part 20: General requirements)
 BS 476-22 Part 22:2002 (Fire resistance and smoke control tests for door and shutter assemblies, normally closed and normally open sliding hardware - Part 22: Fire resistance test for door and shutter assemblies and operation services)
 Test Date: Feb. 07, 2014
 Test Report No: 077-2014
 Test Report Reference No: 0823-2 (Rev. 02)
 Prepared by: [Name] Checked by: [Name] Approved by: [Name]
 P.O. Box 48822, Ras Al Khayma, U.A.E. Tel: +973 733 3388 Fax: +973 733 3389 Email: info@aldehyar.com
 Copyright © 2014 Al Deyar Metal Bldg. Const. Ind. LLC. All rights reserved.



Description

Special designed fully glazed fire rated and non-fire rated fixed and openable glazed windows system, Narrow stiles and rails with concealed hard ware for good aesthetic view, increased glazed area slimmer profile integrity and insulation application special fire resistive infill for EI systems.

Specifications

Construction	Mechanically formed special narrow profile insulated
Materials	Cold rolled galvanized steel sheet confirm to ASTM or equivalent standard
Gauge/Door Thickness	50 mm thick door with skin thickness 1.2 to 1.8 mm / standard custom made profiles for insulated
Core Or Insulation	Fully glazed- No infill for Intergrity (E) and EW, special fire resistive infill for Insulated EI
Glass	Fire protection/ Fire resistive glass in single and Double Glazed unit(DGU)
Application	Light to extra heavy duty use as per SDI
Frame Profiles	Special mechanically formed narrow profile
Ironmongery	Tested and Certified as per door test standard BS and EN for operable windows
Fire Rating	E I 90 minutes as per EN/BS – E -135 minutes
Test Standard	EN 1364-1/ BS 476 part20-22
Certification	Intertek, Exova Warrington
Finish	Powder coated/ Wood finish/ Wet paint meets ANSI A 250.3 and ANSI A 250.10



Fire Rated Stainless Steel UV Protection Window

Additional Features

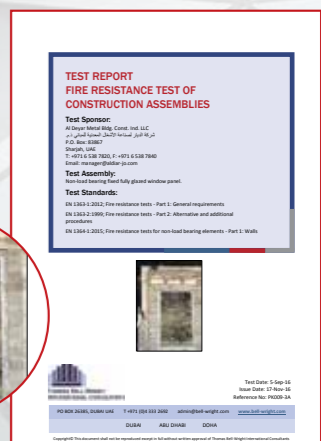
- Seamless welded design
- Alternate Stainless-steel material
- Alternate glass specification
- Smoke rated as per UL1784 / BS476 section 31.1/BSEN 1634-3
- Acoustical



Fire Rated Fixed Windows



Fire Rated Openable Windows



Description

Glazed partition, constructions as part of the building envelope, which generally consists of horizontal and vertical profiles that are joined together, is anchored to the structure of the building.

It fulfils all the required functions of wall or part thereof. partitions are designed as self-supporting constructions

Specifications

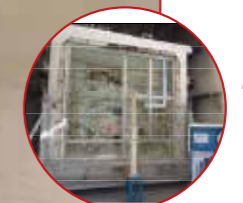
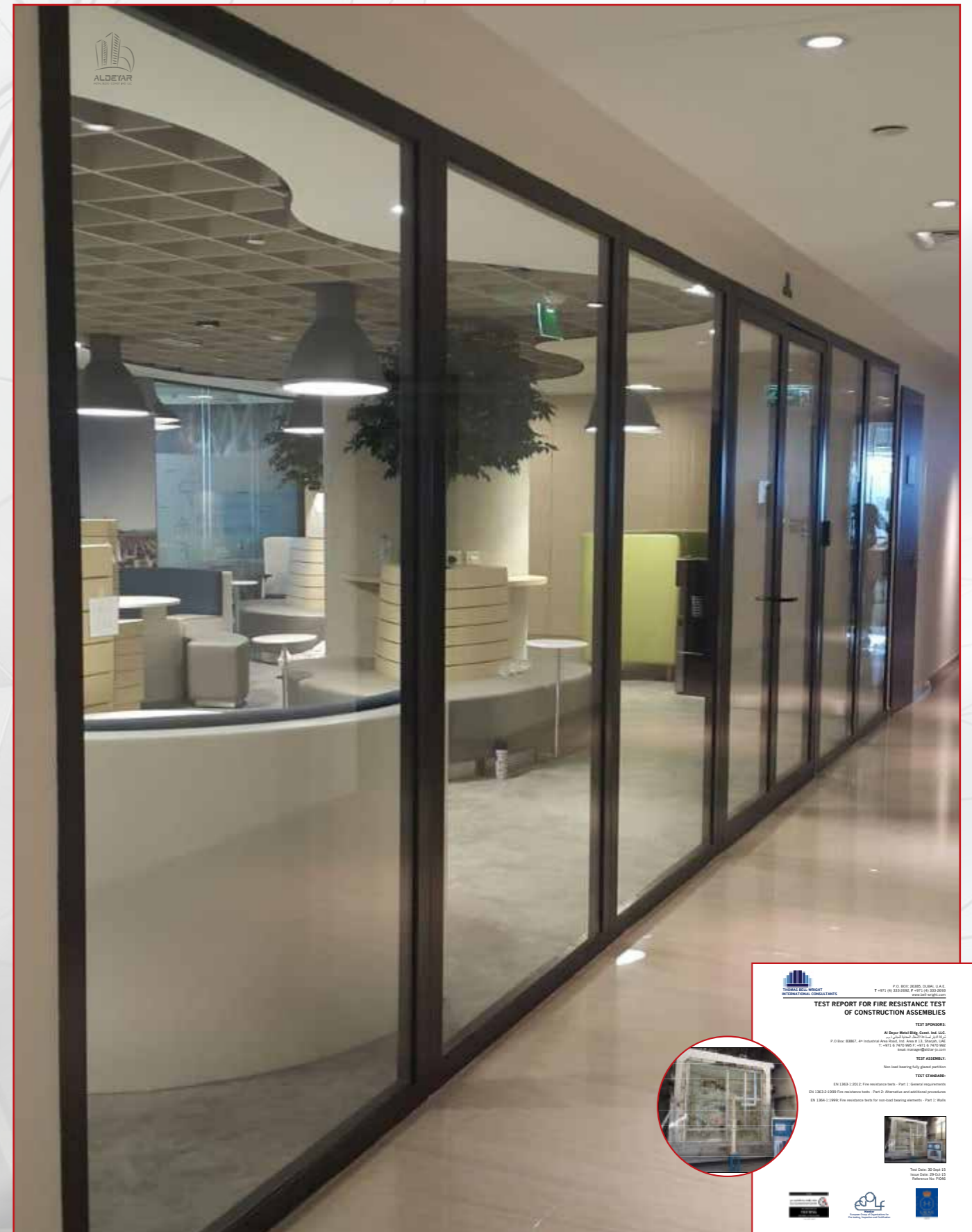
Construction	Mechanically formed special narrow profile
Materials	Cold rolled Galvanized Steel sheet confirms to ASTM or equivalent standards
Size	3000x 3000mm overall – no limits in width
Core Or Insulation	Fully Glazed - No core
Glass	Fire rated glass – confirms to E and EW requirement
Frame Profiles	Mechanically formed special narrow profile
Ironmongery	Tested and Certified as per door test standard BS and EN
Fire Rating	E 180 minutes - EW 120 Minutes
Test Standard	EN 1364-1/BS476 part20-22
Certification	Intertek, Exova Warrington
Finish	Powder coated/ Wood finish/ meets ANSI A 250.3 and ANSI A 250.10

Additional Features

- Alternate Stainless-steel material
- No limitation in width, height can be replicate by a separator
- Glazed panes are separated with same profiles
- Alternate glass specification
- Smoke rated as per UL1784 / BS476 section 31.1/BSEN 1634-3
- Acoustical



Fire Rated Fixed Partitions with unlimited width



Description

Special designed fire rated butt joint system which eliminates intermediate vertical mullions. Available with both Integrity and Insulation with impact and safety rated glass.

Specifications

Construction	Specialty designed narrow Perimeter profiles with resistive infill
Materials	Cold rolled galvanized steel sheet confirm to ASTM or equivalent standard
Sheet Thickness	Making profiles with 1.5mm thick sheet
Glass	Fire rated glass for both Integrity and insulation application- joint together with special intumescent strips
Application	Interior
Fire Rating	EI 60 minutes (E-Integrity and I- Insulation)
Test Standard	EN 1364-1/ BS 476 part20-22
Certification	Intertek, Exova Warrington
Finish	Powder coated/ Wood finish/ Wet paint meets ANSI A 250.3 and ANSI A 250.10

Additional Features

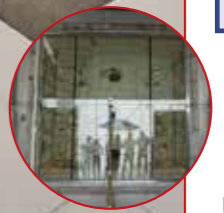
- Alternate Stainless-steel material
- No limits in width
- Meeting joint with intumescent can be replace with verticle steel mullions
- Smoke rated as per UL1784 / BS476 section 31.1/BSEN 1634-3
- Approved by all Civil defense
- Acoustical



Fire Rated Frameless Glass Partitions



TEST REPORT
FIRE RESISTANCE TEST OF CONSTRUCTION ASSEMBLIES
Test Sponsor:
 Al Deyar Metal Building Construction Industries LLC
 P.O. Box 30022, Al Deiyar, Jeddah, K.S.A.
 P.O. Box 30022, Al Deiyar, Jeddah, K.S.A.
 T: +966 2 800 1111 F: +966 2 800 1111
 www.aldeyar.com
Test Assembly:
 Non-Structural Fully Glazed Butt Joints Wall Assembly
Test Standards:
 BS 476-22:2002, Fire resistance tests - Part 2: Alternative and additional procedures
 BS 476-20:2002, Fire resistance tests - Part 2: Alternative and additional procedures
 BS 476-21:2002, Fire resistance tests for non-load bearing elements - Part 2: Walls



Description

Curtain wall, constructions as part of the building envelope, which generally consists of horizontal and vertical profiles that are joined together, is anchored to the load bearing structure of the building and fitted with fixed infills and /or infills which can be opened.

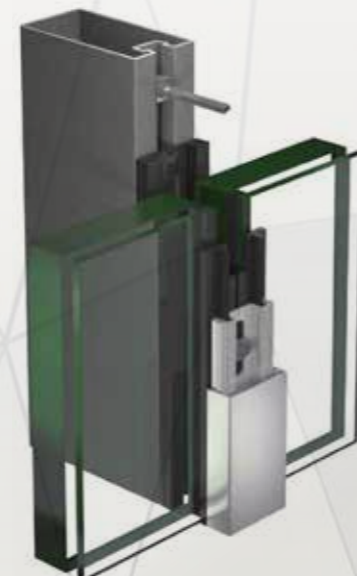
It fulfils all the required functions of inner or outer wall or part thereof.

Curtain walls are designed as self-supporting constructions which transfer the dead load, dynamic loads, loads from the surroundings (wind, snow etc.) and seismic loads to the main structure of the building.

Fire rated curtain wall system is a modular façade construction for universal use. The system is suitable for vertical system with fire rating Integrity and radiation (E and EW) 120 minutes

Specifications

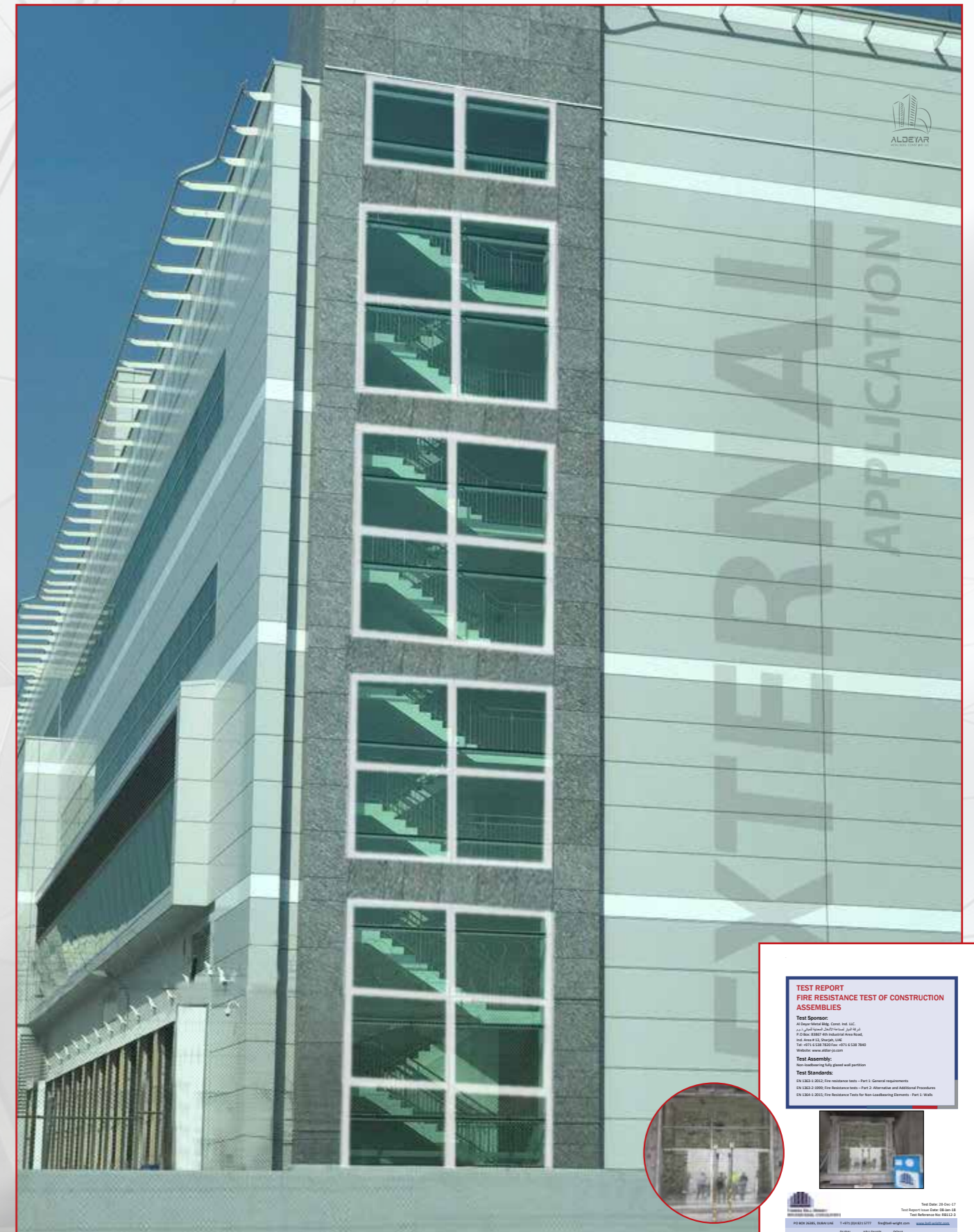
Construction	Mechanically formed special narrow profile from Jansen
Materials	Cold rolled galvanized steel sheet confirm to ASTM or equivalent standard
Profile	Rectangular profile with skin thickness 1.2 to 1.8 mm
Size	3000x 3000mm (wxh) and no limitation in width
Core Or Insulation	Fully glazed- thermally insulated
Glass	Fire rated glass –confirms to EW requirement
Application	Light to extra heavy duty use as per SDI
Frame Profile	Mechanically formed special narrow profile from Jansen
Ironmongery	Tested and Certified as per door test standard BS and EN
Fire Rating	EW 120 minutes
Test Standard	EN 1-1364/ BS 476 part22-20
Certification	Intertek, Exova Warrington
Finish	Powder coated/ Wood finish/ Wet paint meets ANSI A 250.3 and ANSI A 250.10



GI Curtain Wall Section Details

Additional Features

- No limitation in width, height can be replicate by a separator
- Glazed panes are separated with stiles and rails
- Smoke rated as per UL1784 / BS476 section 311/BSEN 1634-3
- Acoustical



TEST REPORT
FIRE RESISTANCE TEST OF CONSTRUCTION ASSEMBLIES

Test Sponsor:
Al Deeyar Metal Bldg. Const. Ind. LLC
P.O. Box 20007, Industrial Area West,
Ras Al Khaima, United Arab Emirates
Tel: +973 433 8822 Fax: +973 433 8840
Website: www.aldeeyar.com

Test Assembly:
Non-Structural Fire Rated Wall Partition

Test Standards:
EN 1364-1:2012, Fire Resistance Tests - Part 1: General requirements
EN 1364-2:2012, Fire Resistance Tests - Part 2: Alternative and Additional Procedures
EN 1364-3:2012, Fire Resistance Tests for Non-Loadbearing Elements - Part 3: Walls

Test Date: 28 Dec 17
Test Report No.: BR-17-08
Test Reference No.: BR-17-08

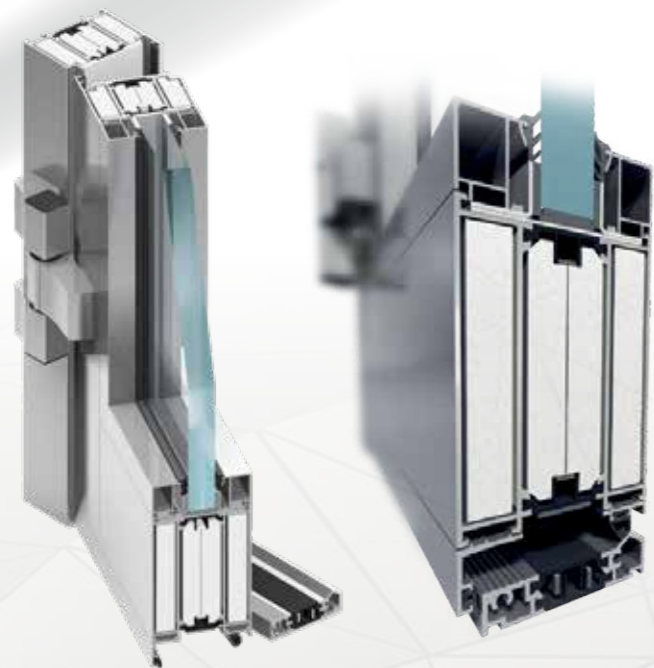
ALDEYAR METAL BLDG. CONST. IND. LLC | Ras Al Khaima, UAE | Tel: +973 433 8822 | Fax: +973 433 8840 | www.aldeeyar.com

Description

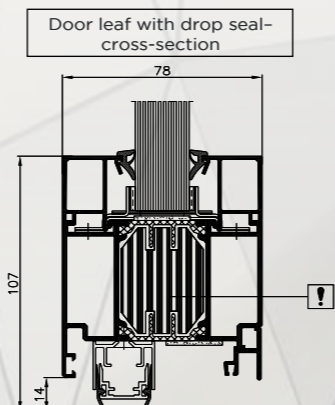
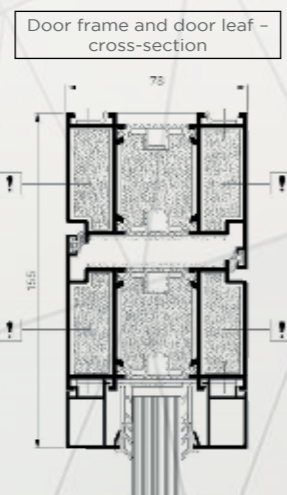
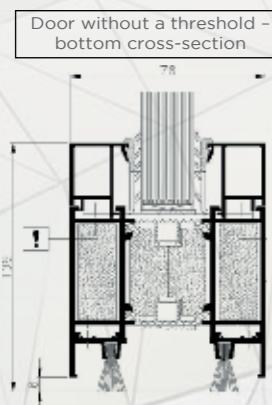
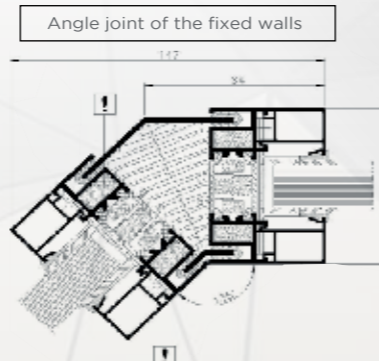
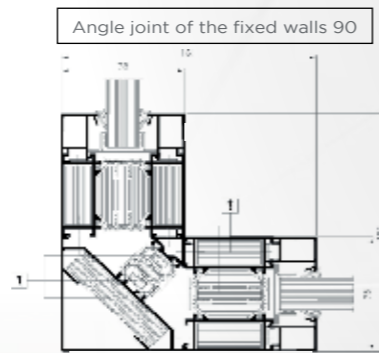
Alternative to steel doors and partition system, special designed fully glazed aluminum fire rated system. Narrow stiles and rails with concealed hardware for good austenitic view, increased glazed area slimmer thermal break profile suitable integrity and insulation application with special fire resistive infill.

Categories

- Aluminium Glazed Double Doors (E, EW, EI)
- Aluminium Glazed Partitions (E, EW, EI)
- Aluminum Fully Glazed Doors With Side And Transom Panels (E, EW, EI)



Fire Rated Aluminium Sections



Description

Bullet resistance doors and windows are designed to provide protection by preventing the passage of projectile at different threat levels and protect personnel against injury.

Doors and windows are suitably reinforced as required by UL and EN test criteria. Each Level have the different thickness of reinforcement and glass thickness.

Specifications

Construction	Mechanically interlocked, hemmed vertical edge seam with inverted top and bottom channel welded to both face sheets /special designed windows
Bullet protection sheets	Thickness of protection plates are depending on threat levels as per UL and EN
Materials	Cover sheet is Cold rolled galvanized steel sheet confirm to ASTM or equivalent standard
Gauge/Door thickness	45-80mm thick door with Cover skin thickness 2mm+ Bullet proof protection sheet as per Threat level
Core or insulation	Honeycomb with Ballistic Sheet
Frame gauge/Jamb depth	2mm up to 500mm- No limits
Test Standard	UL752, EN 1522/1523 and Glass as per EN 1063
Levels	UL752 Level-3 and Level 8 doors and windows, FB4 and FB6 doors and windows
Finish	Powder coated/ Wood finish/ meets ANSI A 250.3 and ANSI A 250.10

Bullet resistance doors and windows. UL and EN

Additional Features

- Seamless welded design
- Vision panel
- Alternate Stainless-steel material
- Knock down frame /Groove frame with kerf gasket
- Smoke rated as per UL1784 / BS476 section 31.1/BSEN 1634-3
- STC rated

Typical application areas are

1. Embassies
2. VIP Offices
3. Guard House
4. Cashier Rooms
5. Bank court houses
6. Military buildings
7. Control rooms
8. Cashier area
9. Jewelry shops & ETC.



Bullet Proof Steel Door

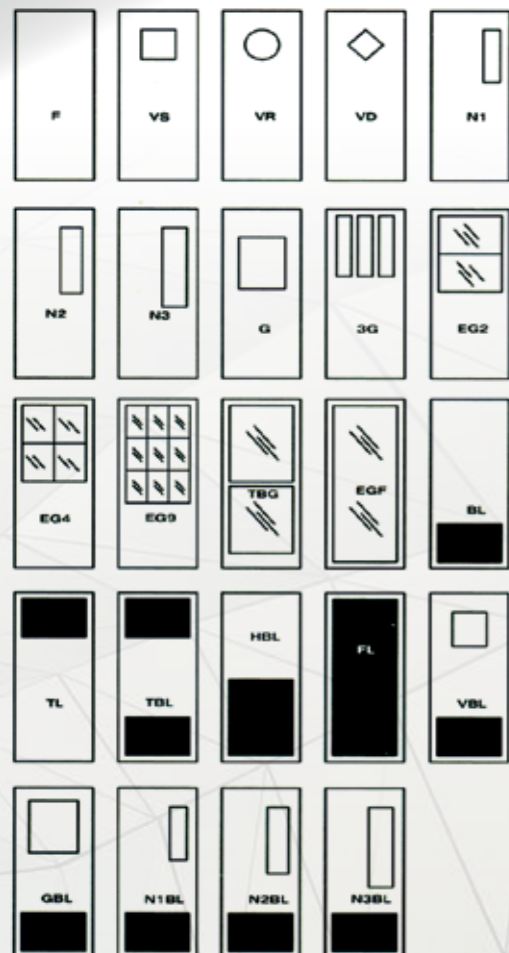


At Al Osool, we are equipped to offer Fire Doors tested and certified to British Standards. European standard/ UL standard the significant requirements of this standards are listed below.

British Standards

BS 476, Parts 20 & 22.

- A fire door MUST be self-closing. Only the active door leaf of an access panel (service ducts) or cupboards, can however be installed without a closer but with a dead lock and a "Fire Door, Keep Shut" sign placed clear on the door face.
- Unless shown to be satisfactory when tested as part of a fire door assembly, the components on which the door is hung should be fire rated.
- If a fire door is held open, it must be equipped with a tested, automatic release mechanism actuated by an automatic fire detection and alarm system, fusible link (not if door is fitted in an opening provided as means of escape), or a door-closed delay device.
- Signs and other items of hardware containing plastic should not be fitted on the non-fire side of the metal door or frame



Basics	
F	Full flush
VS	Vision small
VR	Vision round
VD	Vision diamond
N1	Narrow lite
N2	Narrow lite
N3	Narrow lite
G	Half glass
3G	3 Glass
EG2	Etched glass 2 section
EG4	Etched glass 4 section
EG9	Etched glass 9 section
TBG	Top & bottom glass
EGF	Etched glass full
BL	Bottom louver
TL	Top louver
TBL	Top bottom louver
HBL	Half bottom louver
FL	Full louver
VBL	Vision + bottom louver
GBL	Half glass with bottom louver
N1BL	Narrow lite
N2BL	Narrow lite with bottom louver
N3BL	Narrow lite

For this, the door must serve as a fire and smoke barrier.

Studies have shown that more people have lost lives due to smoke asphyxiation than fire.

Fire Doors must serve four main functions

- serve as a regular door at all times and provide ready egress from a fire area during a fire
- inhibit spreading of fire
- protect life and property by reducing smoke hazards.

When an opening requires strength, durability, or maximum fire resistance, steel doors and frames provide the qualities to meet these needs. Due to growing access control needs, fire doors have today evolved to accommodate the growing electrified functions a door must support.

Designed to meet the life-safety requirements in various types of buildings and structures, Al Osool fire doors help in containing the spread of fire. These doors complement existing passive fire-fighting systems.

These doors also meet all the stipulated international, national and regional fire safety standards. These doors are available with honeycomb core as standard infill material with other optional cores. These doors are rated for 45, 60, 90, 100, 120, 180 & 240 minutes' fire withstanding ability. All fire doors are factory finished with Powder coating.

Applications

These doors can be used in high-rise buildings, metro railway stations, telecom centers, power plants, cellular network stations, garment processing units, shopping malls, industrial plants, multiplexes, hotels, auditoriums, software parks, restaurants, warehouses and labor camps etc. Al Osool doors and frames are designed to perform in the most demanding environment.

Warranties

All our products carry a warranty of 1 year against manufacturing defects.

Features

- Available in galvanised or stainless steel
- BMTRADA, WARRINGTON CERTIFIER & INTERTEK certified labeled doors for 60, 120, 180 & 240 minutes
- Clear vision Panel for up to 240 minutes' fire rating
- No welding joints and sharp edges, interlocking at the stiles
- Factory prepped to receive all types of hardware
- High aesthetics and robust structure
- Fully flush constructions
- Easy to install on a flush wall opening & dry wall partitions
- Factory finished for primer and paint finishes.

Standards and Certifications

- Fire doors are tested as per BS/EN and UL standards

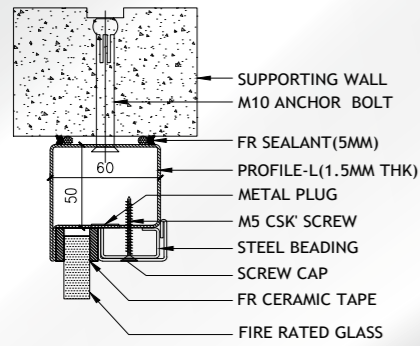
Optional Features

- Wood Grain can be provided as an optional finish.

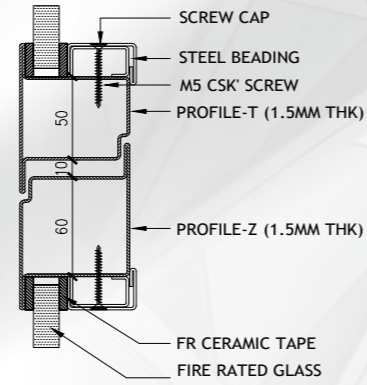
Matching appearance

Al Osool advises Door leaf, Frames and components from one Source!

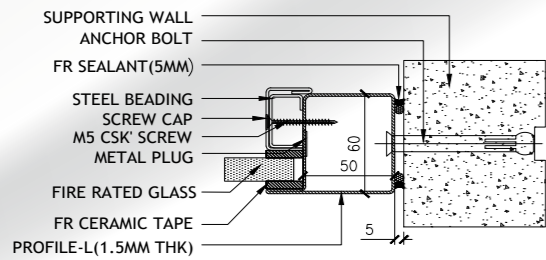




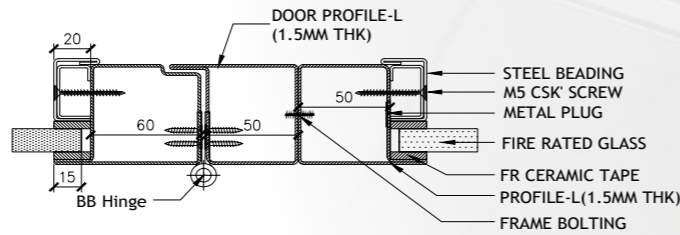
SECTION - PANEL HEADER



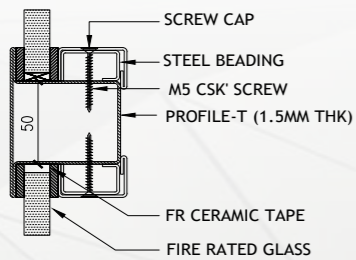
SECTION - DOOR HEADER



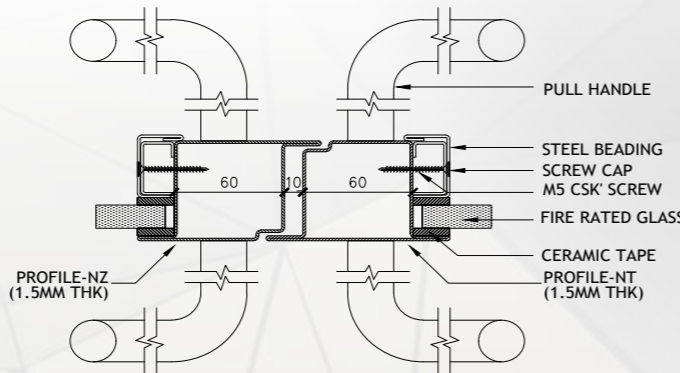
SECTION - PANEL SIDE JAMB



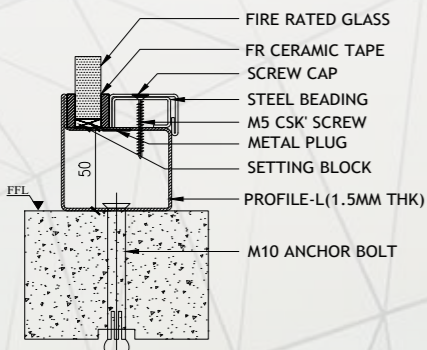
SECTION - DOOR HINGE JAMB + SIDE FIXED PANEL



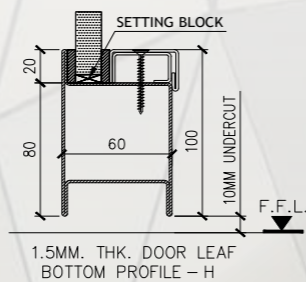
SECTION - PANEL DIVIDER



SECTION - DOOR OPENING DETAILS



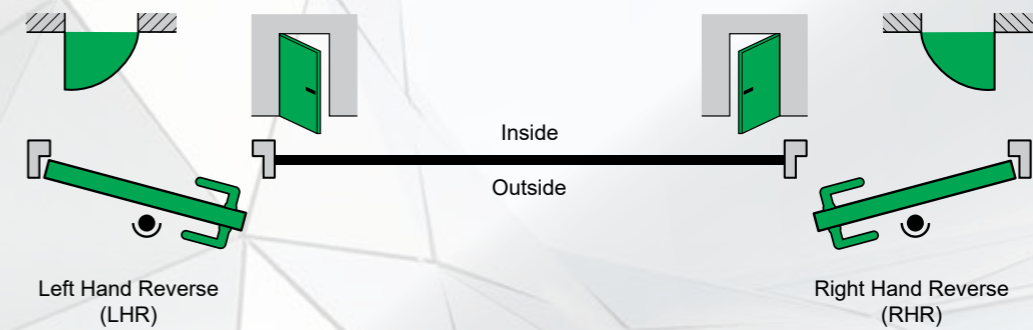
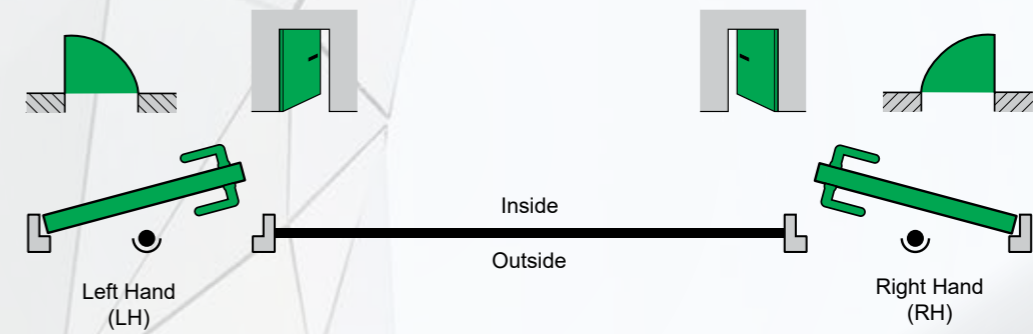
SECTION - PANEL BOTTOM



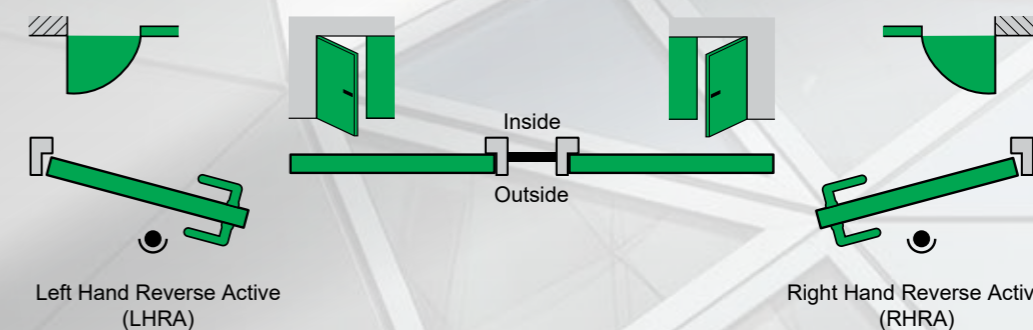
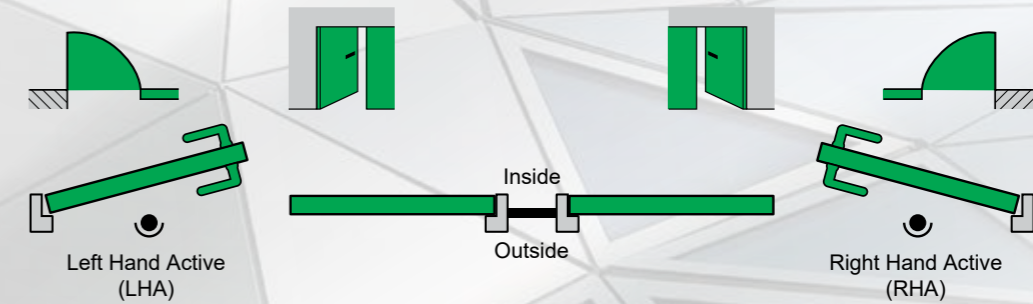
SECTION - DOOR BOTTOM

Universal handing of Doors according to UAE reading conventions

Single Leaf Door

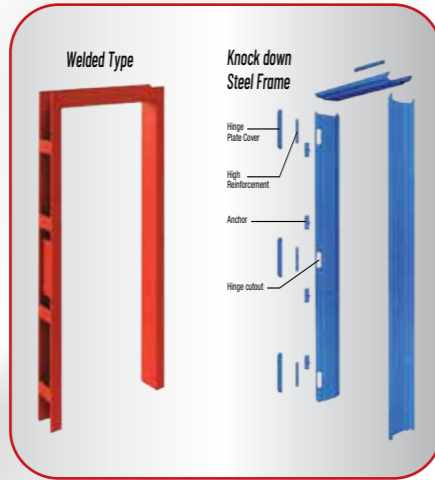


Double Leaf Door





Steel Door Construction Overview



Steel Frame Construction



Door Infill Details, Vision Panel & Fire Rated Louver Details



Garbage And Linen Chute Doors (Fire Rated)



Garbage Chute with Foot Pedal



Manufacturer Of Fire Cabinets



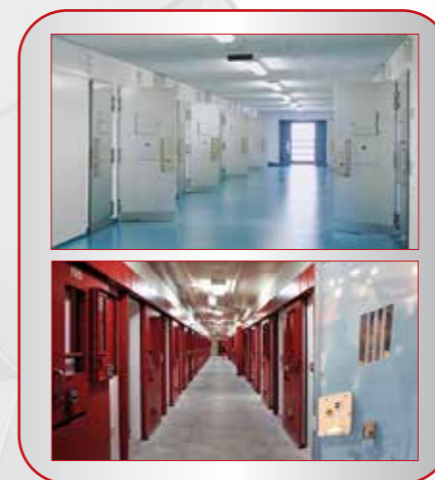
Fire Rated Single Leaf Doorset With / Without Vision Panel



Fire Rated Double Leaf Doorset With / Without Vision Panel



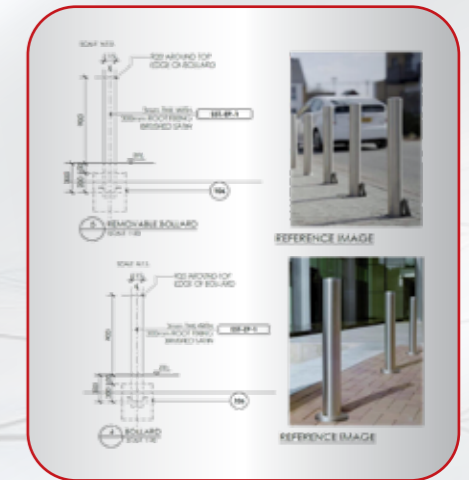
Fire Rated Access Panel



Security And Detention Doors & Windows



Steel And Stainless Steel Hand Rails



Steel and Stainless steel Bollard Bar



Adwea / AADC Approved Fully Louvered (Substation Sand Trap Doors and Windows)



Fully Louvered Doors (Substation Sand Trap Doors)



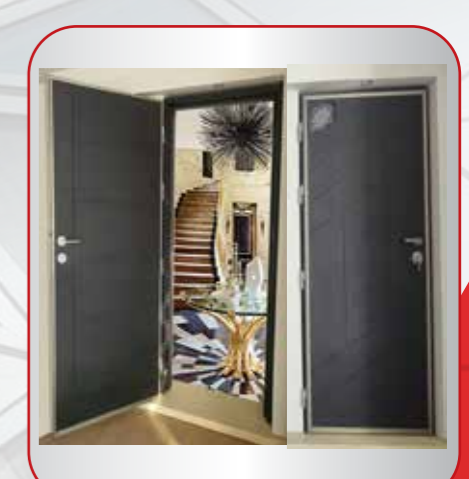
Fire Rated Wooden Doors



Rolling Shutters



Sectional Overhead Doors



Armour Type Villa Doors



ALOSOOL BLDG. METALLIC CONST. IND. LLC.

📍 Industrial Area 13 - Sharjah - UAE

☎ +971 6 538 55 72 📠 +971 6 538 40 45

📍 47632 Sharjah - United Arab Emirates

✉ info@alosoouuae.com 🌐 www.alosoouuae.com

